

# LF-III Load Cell

## Mode of Connection

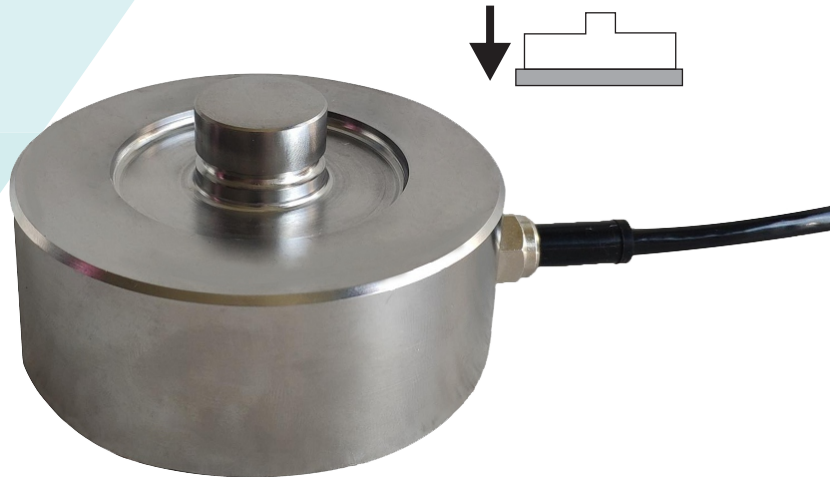
Input+: Red  
 Input-: Black  
 Output+: Green  
 Output-: White

Input Impedance:  $750 \pm 10\Omega$

Output Impedance:  $702 \pm 2\Omega$

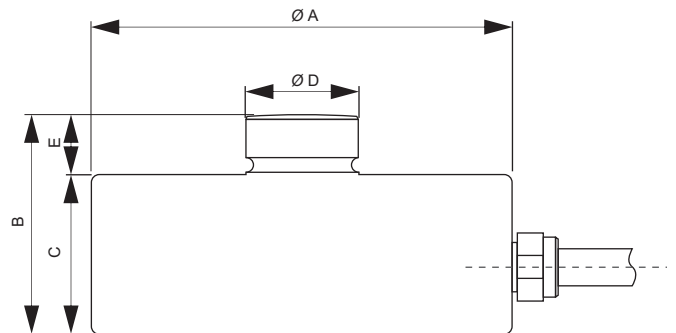
## Miniature Compression Load Cell

Ideally suited for Mini weighbridge & Tank, hopper weighing  
 Protection Class Ip68  
 Alloy Steel or Stainless Steel  
 Capacity 250kg, 500kg, 1t, 2.5t, 5t, 7.5t,  
 10t, 15t, 30t, 50t & 100t



Capacity (kg/t)	A	B	C	D	E
250 kg	82	44	32	22	12
500 kg	82	44	32	22	12
1 ~ 10 t	82	44	32	22	12
15 t	100	48.5	35	28	13.5
30 t	126	54	40	35	14
50 ~ 100t	165	80	60	60	20

## Dimensions



## Specifications:

Rated Output	$2.0 \pm 0.002\text{mV/V}$
Total error	$\pm 0.05\% \text{ F.S}$
Temperature effect Zero	$\pm 0.02\% \text{ F.S } 10^\circ\text{C}$
Temperature effect Sensitivity	$\pm 0.02\% \text{ F.S } 10^\circ\text{C}$
Creep (30 min)	$\pm 0.02\% \text{ F.S}$
Operating Temperature Range	$-30 \sim +70^\circ\text{C}$
Safe Overload	150% F.S
Destructive Load	200% F.S
Excitation Recommend	4~12 VDC Max 15VDC
Construction	Alloy Steel or Stainless Steel
Protection Class	IP68

## Cable Length:

250kg ~ 10ton Standard 5meter  
 15 ton ~ 100 ton Standard 10meter  
 Diameter: Ø5  
 4 Core Cable

Reliable and Rugged! 